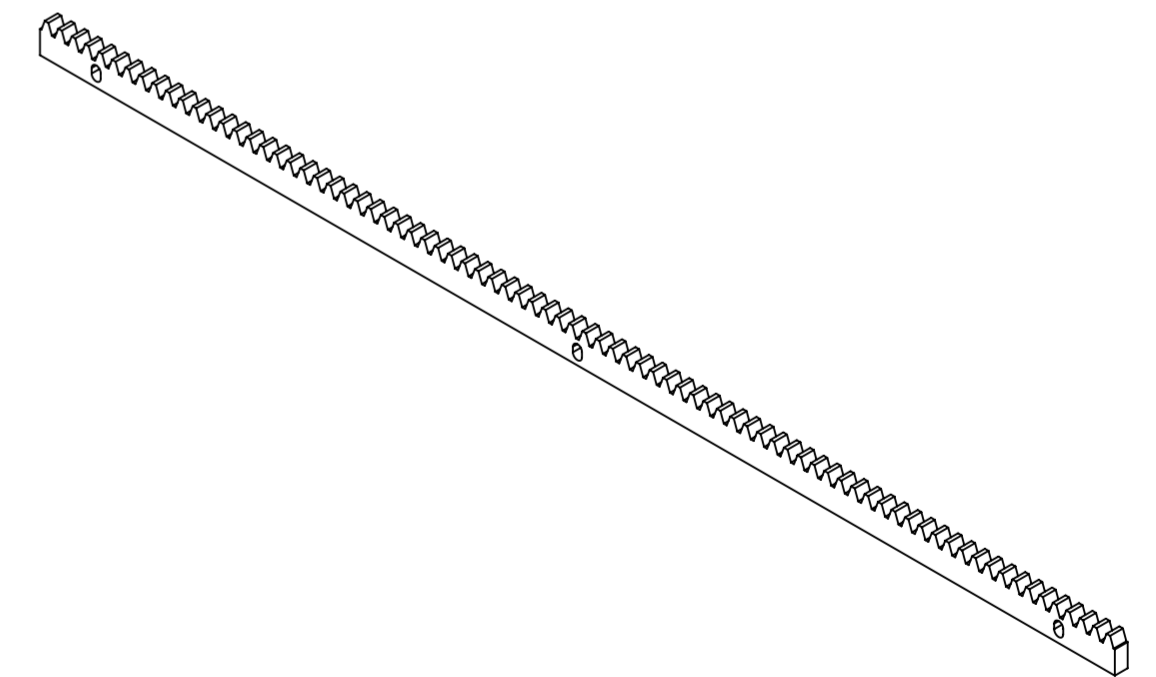
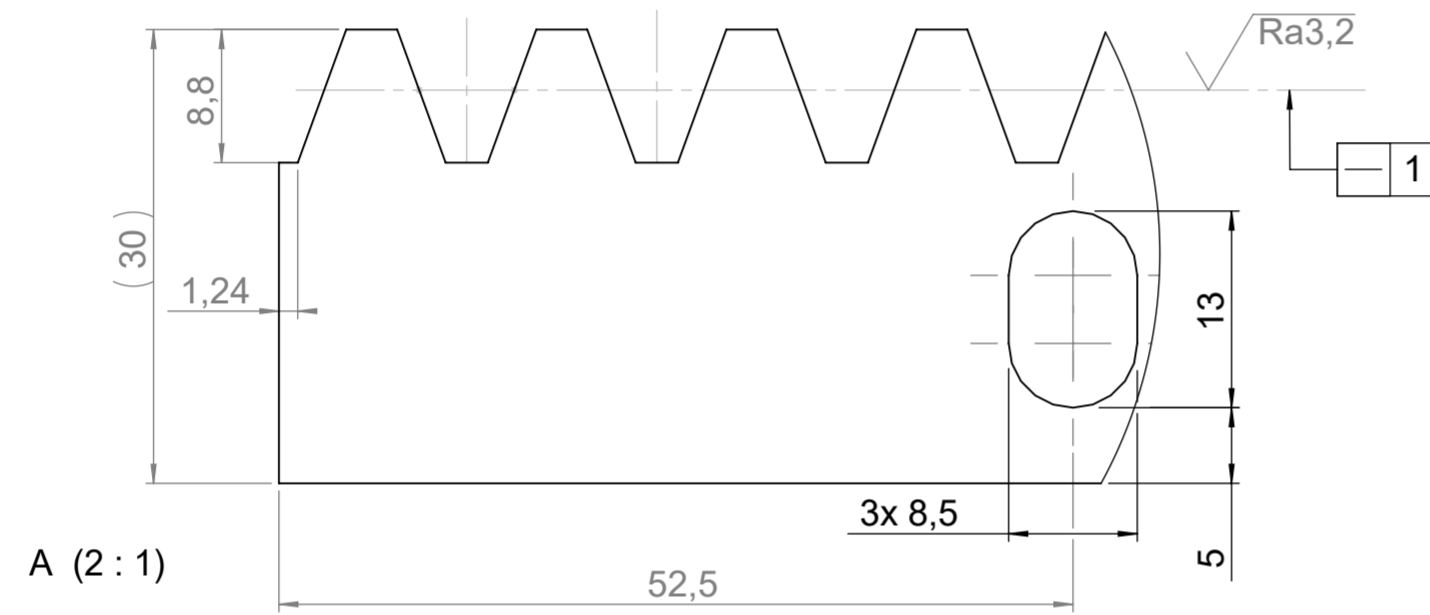
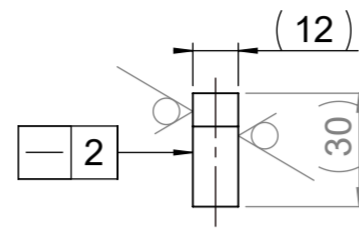
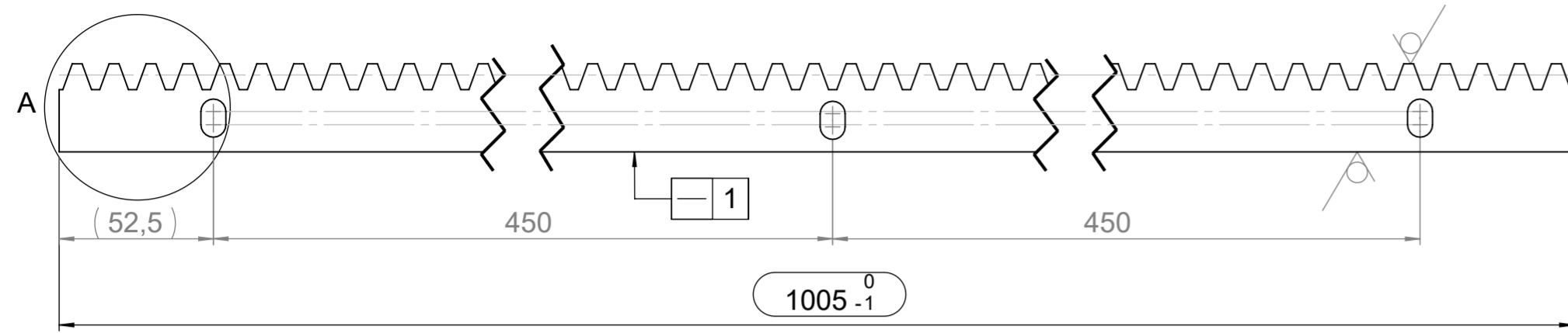


Inspection:
The parts have to be inspected during manufacturing according to the quality control plan released by Sommer. Modifications on the manufacturing process and/or the quality control plan must generally be inspected by Sommer.



		Issue Panel Description		Date	Name
		Date Name Drawn 2013.01.22 Roewekamp Checked 2013.02.14 Roewekamp Appr. 2013.02.14 Roewekamp All dimensions in millimetres		Modifications Submission Level: B	
Material 30 x12 e.g. Flachstahl 30 x12 z.B. DIN 1017-S235JR Surface treatment ISO 2081-Fe/Zn12/A blue or Coating DIN EN ISO 1461-tZn o		Article number 5825V001		Size	Sheet
Dimensions without individual tolerance indications: ISO 2768-mK Scale 1:2 (2:1) Do not scale-if in doubt ask!		Copyright and property of Sommer Antriebs- und Funktechnik GmbH. All rights reserved. Referred to protection notice ISO 16016.		A2	1 1 Sh
		Replacement for:		Replaced by:	